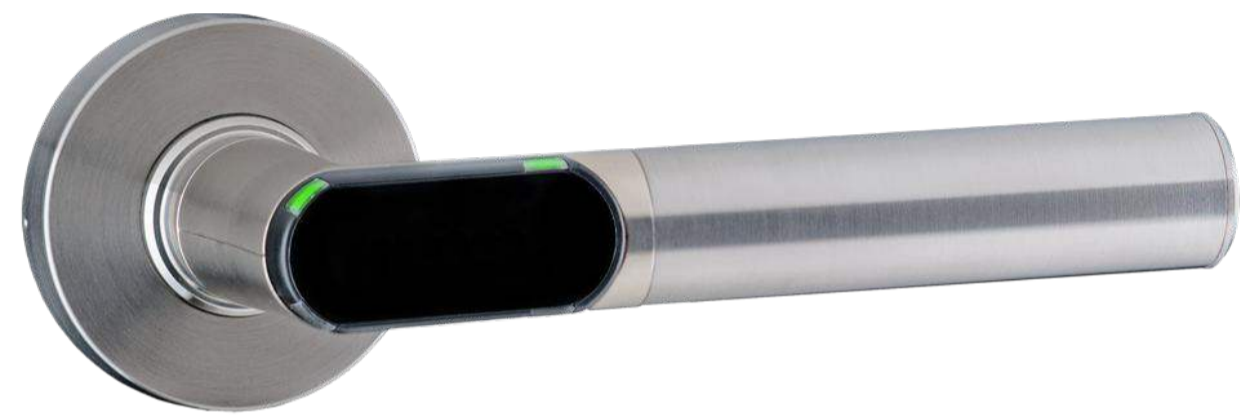


Handle SMK-H1

The Smart MasterKey Handle is a battery-operated access device. The electronic handle needs to be installed to the outside of the door. The handle enables control of internal and external doors with mobile access and RFID cards. All your digital keys can be safely and conveniently used with the Smart MasterKey mobile app, and access rights can be shared with anyone. No internet connection is required to access your premises. The product is suitable for all wood, steel and aluminum doors.



Features

- **Modern.** The electronic handle with a modern stainless steel design replaces the mechanical handle on the outside of the door. Doors are opened via the Smart MasterKey mobile app via Bluetooth® or RFID cards, which means no internet access is needed.
- **Suitable for both old and new buildings.** In addition to new objects, it is also possible to replace existing mechanical locking systems with our modern wireless access system.
- **Energy efficient**
The handle is characterized by a long battery life of up to 2 years per battery set.
- **Share keys in seconds.** Give access by sending a digital key via the Smart MasterKey mobile app. The owner of the handle can share digital keys to users that last either for a specified period of time or forever.
- **Easy to install.** Our product is wireless, so the electronic handle can be installed without external help.
- **Different versions available.** There are multiple shapes and color options available to meet your needs.

Technical specification

Compatibility	Suitable for all doors with narrow or wide frame, with backset of more than 20mm. Door thickness of 30mm up to 110mm
Material	Stainless steel design. Handle's housing as well as shell made of nickel-plated brass. Hard plastic cover for the antenna area.
Colour options	Chrome Black Anthracite Gold Bronze
Power supply	1 x CR123A Lithium 3V battery
Battery lifetime	Up to 32,000 activations (approx. 2 years)
Communication protocols	BLE (Bluetooth Low Energy), RFID
IP rating	Internal and external (IP66) available
Operating temperature	-25°C to +65°C



Physical properties

Dimensions:

Handle length: 140mm - 160mm

Handle depth: 70mm - 80mm

Smart MasterKey and the logo are registered trademarks owned by Smart MasterKey OÜ. Other trademarks and trade names belong to their respective owners.



Customer support
support@smartmasterkey.com

Sales
sales@smartmasterkey.com